

**MAJOR TWO-DAY
ONLINE ONLY AUCTION!**

**DATE: Bidding
Closes Wednesday
& Thursday,
February 2nd & 3rd
at 10:00 A.M. EST
Each Day**

INSPECTION: Monday,
January 31st & Tuesday,
February 1st from
9:00 A.M. – 4:00 P.M. or
Earlier by Appointment

HIGHLIGHTS:

- 5,000-Ton Clearing Aluminum Extrusion Press, up to 14" Billet Diameter
- CNC Machining & Turning Centers
- CNC & Automatic Profile Extrusion Saw Lines
- Aluminum Fabrication & Processing Machinery
- (25+) Hydraulic & Mechanical Press Brakes up to 230-Ton x 12' Capacity
- Machine Tools & Machine Tool Accessories
- (46) Bridge Cranes 3- to 25-Ton Capacity
- Diesel & LP Forklifts up to 30,000-Lb. Capacity
- Wheel Loaders, Skid Steers, Rolling Stock
- QC & Inspection
- Plant Support Equipment
- Massive Spare Parts, Supplies, & Stores Inventories

BID ONLINE AT BidSpotter

In Conjunction With:



Technical Advisors:



CRG AUCTION

 ALUMINUM SHAPES L.L.C.

WORLD CLASS ALUMINUM EXTRUSION PLANT

9000 River Road, Delair (Pennsauken Township), NJ 08110



(1 OF 2) HAAS VF-12/40 CNC VERTICAL MACHINING CENTERS

This will be a major International Sale – Not to be missed!



5,000-TON
CLEARING
ALUMINUM
EXTRUSION
PRESS

For complete catalog

crgllc.com 1.800.300.6852

Auction Specialists • Appraisal Experts • Online or On-site
1654 King Street, Enfield, Connecticut 06082
(860) 623-9060 • (800) 300-6852 • Fax: (860) 623-9160
Bill Firestone, President



(1 OF 2) HAAS VF-12/40 CNC VERTICAL MACHINING CENTERS



HAAS MINI-MILL CNC VERTICAL MACHINING CENTER

CNC MACHINING & TURNING



HAAS EC-400 CNC HORIZONTAL MACHINING CENTER

2016 HAAS Model VF-12/40 CNC Vertical Machining Center, CAT 40 spindle, 150" x 28" T-slotted table, with Haas controls, and 24-position automatic tool changer.

2014 HAAS Model VF-12/40 CNC Vertical Machining Center, CAT 40 spindle, 150" x 28" T-slotted table, with Haas controls, and 24-position automatic tool changer.

2016 HAAS Model EC-400 CNC Horizontal Machining Center, 4-axis capable, CAT 40 spindle, 15.8" x 15.8" pallet table, with 24-position automatic tool changer, Haas automation CNC controller, and Renishaw tool setter system.

HAAS Model SL-30T CNC Lathe, 10" chuck, tool setter, tailstock, with Haas Model Servo 300 bar stock feeder.

HAAS Model TM-2 CNC Vertical Milling Machine, CAT 40 spindle, 11" x 58" T-slotted table, with Haas controls, and 10-position automatic tool changer.



HAAS SL-30 CNC TURNING CENTER



HAAS VF-4 CNC VERTICAL MACHINING CENTER

**Huge Quantity
of Aluminum
Extrusion Parts**



5,000-TON CLEARING ALUMINUM EXTRUSION PRESS

CLEARING ALUMINUM EXTRUSION PRESS

5,000-Ton CLEARING 14" Aluminum Extrusion Press Line, oil hydraulic press, 4 tie rods, 14"D. x 40"L. billet, (3) 250 HP motors, oilgear pumps, Allen Bradley controls, including: Belco 14" billet oven, billet transfer system, butt shear, 12' water box, 26' cooling table, Granco Clark single puller, cooling fans, 175'L. x 25' handling system, 70-ton Youngstown stretcher, finish saw and conveyor. Also Available: 8'W. Belco aging oven, (6) Thermika die ovens.

CNC & AUTOMATIC PROFILE EXTRUSION SAW LINES

ELUMATEC Model DG142/E11 CNC Double Miter Saw, 8.2 kW motors, (2) cutting stations, pneumatic clamping, with programmable control station.

METLSAW Model CS2 T1022 10" x 22" Automatic Precision Cut-Off Saw, with hydraulic clamp, Allen Bradley Model Panelview 1000 PLC control, feed and exit conveyors, stacking table, and Dustkop dust collector.



METLSAW CS SERIES CNC CUT-OFF SAW WITH AUTO FEED

B&O Model B-824 Cold Cut-Off Saw, power clamping, with feed and exit conveyors, and Torit dust collector.

B&O Model 6000B Cold Cut-Off Saw, with Allen Bradley programmable control, pneumatic clamping, 18" x 20' roller conveyor, and 10" x 10' power belt conveyor.

OLIVER 24" Cut-Off Saw, with Hammond dust collector.

(3) **PISTORIUS 16" Double-Head Miter Saws**, 7-1/2 HP motor.

OLIVER 20" Horizontal Acting Cut-Off Saw, approximately 10 HP motor, with Hammond dust collector.

(3) **OLIVER Model 94-DHX 16" Cut-Off Saws**, each with Hammond dust collector.

OLIVER Model 94-DHX 16" Cut-Off Saw.

Original Saw Model 35769 16" Radial Arm Saw, with roller-feed conveyor, and Torit dust collector.



ELUMATEC DOUBLE UP-ACTING PNEUMATIC CUT-OFF SAW



(1 OF 2) B & O ALUMINUM EXTRUSION CUT-OFF SAWS

OLIVER 36" ALUMINUM CUT-OFF SAW



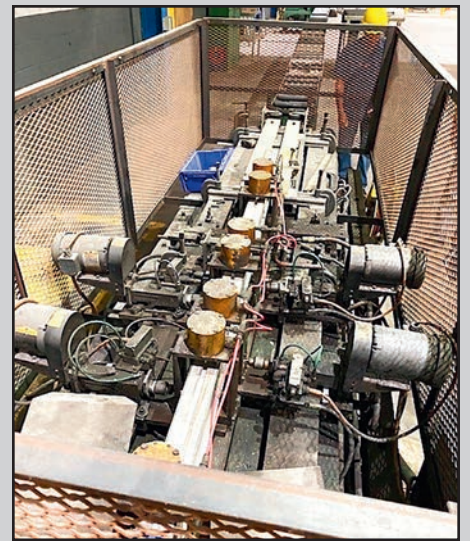
OLIVER 36" ALUMINUM CUT-OFF SAW





JIANGXIN PROFILE SHOT BLAST MACHINE

Huge Quantity of Aluminum Extrusion Parts



CUSTOM SCAFFOLDING MACHINE

ALUMINUM FABRICATION & PROCESSING MACHINERY

YODER 2-Stand Roll Former, 3" diameter arbors, 24" effective roll space, 6"-12" adjustable upper arbors, 10 HP with safety light curtain.

JIANGXIN MACHINERY Model JX1108A-2B-00 Profile Shot Blast Machine, 300 amp input required, processing envelope specs: 32"W. x 8"H. x 18"L., media: stainless steel shot.

Custom Built Scaffolding Machine, including 6-head electric drill station with push button controls, 8" capacity electric roller press for plastic insert, infeed and outfeed roller conveyor.

2014 KLI Pucker/Briquetter, type YJB88, 20 MPa pressure.

2014 OMAV Pucker/Briquetter, 60 amp, puck size: 2-3/4" diameter x 5"L.



YODER 2-STAND ROLL FORMER



2014 KLI PUCKER/BRIQUETTER



2014 OMAV PUCKER/BRIQUETTER



SAMPLE PUCK

PRESS BRAKES

CINCINNATI Model 90CB 90-Ton Hydraulic Press Brake, 12' bed length.

(4) **CINCINNATI Model 9 224-Ton Press Brake**, 10-14' bed lengths.

NIAGARA Model IB65-8-10 100-Ton Press Brake, 10' bed length.

CINCINNATI Model 5 135-Ton Press Brake, 12' bed length.

CYRIL BATH Model 150-10 150-Ton Press Brake, 12' bed length.

VERSON Model 306-F 90-Ton Press Brake, 22" x 96" permanently flanged bed.

Large Qty. of Uni-Punch Dies



VERSON 8' X 100-TON MECHANICAL PRESS BRAKE

CHICAGO DREIS & KRUMP Model 1012-L 90-Ton Press Brake, 12' bed length.

(2) **CHICAGO DREIS & KRUMP Model 410-D 90-Ton Press Brakes**, 12' bed length.

CINCINNATI Model 5 135-Ton Press Brake, 12' bed length.

(2) **MERCURY Model 10010 100-Ton Press Brakes**.

CINCINNATI Model 50-6 90-Ton Press Brake.

AIRTHERM Model 2512 Approximately 100-Ton Press Brake.

VERSON Model B-58 Approximately 115-Ton Press Brake, 10' bed length.



CINCINNATI 12' X 100-TON MECHANICAL PRESS BRAKE



CINCINNATI 12' X 225-TON MECHANICAL PRESS BRAKE



CINCINNATI 10' X 100-TON HYDRAULIC PRESS BRAKE



NIAGARA IB65-8-10 10' X 100-TON PRESS BRAKE

DATE:
Bidding Closes Wednesday & Thursday, February 2nd & 3rd at 10:00 A.M. EST Each Day

INSPECTION:
 Monday, January 31st & Tuesday, February 1st from 9:00 A.M. - 4:00 P.M. or Earlier by Appointment



JLG DIESEL ARTICULATING BOOM LIFT

DATE: Bidding Closes Wednesday & Thursday, February 2nd & 3rd at 10:00 A.M. EST Each Day

INSPECTION: Monday, January 31 & Tuesday, February 1st from 9:00 A.M. – 4:00 P.M. or Earlier by Appointment

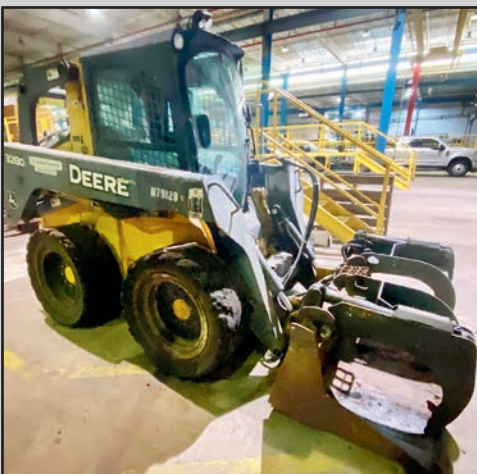
BID ONLINE AT BidSpotter



2017 FORD F-350 CREW CAB PICKUP



2018 FORD F-450 DUALY PICKUP TRUCK



JOHN DEERE 328D SKID STEER WITH GRAPPLE BUCKET



(1 OF 2) 2014 YALE 8,950-LB. DIESEL FORKLIFTS

MATERIAL HANDLING & ROLLING STOCK

CATERPILLAR 914G2 Wheel Loader.

JOHN DEERE Model 328D Skid Steer Loader, 2,747 hours.

(2) CATERPILLAR Model 2P6000 5,500-Lb. LP Gas Forklifts, 3-stage mast.

(2) 2014 YALE Model GDP110VXNKHV099 8,950-Lb. Diesel Forklifts, 2-stage mast, with fork rotator attachment.

(4) 2013 YALE Model GLP060VXNVRE087 5,700-Lb. LP Forklifts, 3-stage mast 6,000, (1) with fork rotator attachment.

MITSUBISHI Model FGC25 5,000-Lb. 189" Gas Forklift, 3-stage mast with side shift, overhead guard, with rotary forks.

NISSAN Model MUG1F2A30LV 5,200-Lb. 15.5' LP Gas Forklift, 3-stage mast with side shift, with 48" forks.

JLG Model 600AJ 500-Lb. 60' Mobile Boom Type Aerial Lift.

(2) JLG Model 2646ES 26' Electric Scissor Lifts.

ADVANCE Model Exterra Ride-On Floor Sweeper.

FACTORY CAT Model Hammerhead 600SS Walk-Behind Floor Scrubber, battery powered.

2018 FORD F-450 Crew Cab Pickup Truck, VIN 1FT8W4DT0KEC73278, odometer reads 7,686 miles, with Boss 9' Super Duty snowplow 52.

2017 FORD F-350 Crew Cab Pickup Truck, VIN 1FT8W3B608EE23387, odometer reads 17,534 miles, with Boss 8' Smart Shield snowplow.

2015 FREIGHTLINER M2 106 Single Axle Flatbed Truck, VIN 3ALACXDT0FDGN8983.

2009 KALMAR 4X2 Yard Truck, odometer reads 51,999 miles.

2016 BUICK Encore FWD 4-Door SUV Sport Utility Vehicle, VIN KL4CJASB1-GB678618, odometer reads 17,263 miles.



For complete catalog
crgllc.com
 1.800.300.6852

BRIDGE CRANES

KONECRANES 20-Ton x Approximately 50' Span Double Girder Bridge Crane, pendant controlled, with (2) P&H 10-ton hoists.

(4) PHILADELPHIA TRAMRAIL 7-1/2-Ton x 60' Span Double Girder Bridge Cranes, top running, pendant controlled, with P&H 7.5-Ton hoist.

PHILADELPHIA TRAMRAIL 7-1/2-Ton x 60' Span Monorail Crane, top running, with (2) P&H 7.5-ton hoists.

PHILADELPHIA TRAMRAIL 7-1/2-Ton x 20' Span Double Girder Bridge Crane, top running, pendant controlled, with P&H 7.5-ton hoist.

(2) ACCO-WRIGHT 5-Ton x 60' Span Double Girder Bridge Cranes, underslung, pendant controlled, with P&H 5-ton hoist.

P&H 10-Ton x 60' Span Double Girder Bridge Crane, dual hoist, top running, pendant controlled, with P&H 5-ton hoist.

(16) P&H, DEMAG, ATLANTIC and PHILADELPHIA 5-Ton 60' Span Double Girder Bridge Cranes, top running, pendant controlled with P&H and Philadelphia Tramrail 5-ton hoist.

PHILADELPHIA TRAMRAIL 10-Ton 40' Span Single Girder Bridge Crane, underslung, pendant controlled, with P&H 10-ton hoist.

(2) PHILADELPHIA TRAMRAIL 5-Ton x 60' Span Double Girder Bridge Cranes, underslung, pendant controlled, with P&H 5-ton hoist.



SAMPLE BRIDGE CRANE



SAMPLE BRIDGE CRANE



(2) ATLAS COPCO 200 HP ROTARY SCREW AIR COMPRESSORS



MICRO VU EXCEL 661 HC MULTI-SENSOR MEASURING CENTER

DATE: Bidding Closes Wednesday & Thursday, February 2nd & 3rd at 10:00 A.M. EST Each Day

INSPECTION: Monday, January 31 & Tuesday, February 1st from 9:00 A.M. – 4:00 P.M. or Earlier by Appointment

READING CRANE 5-Ton x Approximately 50' Span Underslung Bridge Crane, single beam, with Model Spacemaster bottom riding cable hoist, and wireless operator control.

(2) PHILADELPHIA TRAMRAIL 3-Ton x 60' Span Double Girder Bridge Cranes, top running, pendant controlled, with P&H 3-ton hoist.

(2) ATLANTIC CRANE 3-Ton x 60' Span Single Girder Bridge Cranes, top running, pendant controlled, with P&H 3-ton and 5-ton hoists.

(3) ABELL-HOWE and PHILADELPHIA 5-Ton x 50' Span Single Girder Bridge Cranes, underslung, pendant controlled, with P&H 5-ton hoist.

5-Ton x Approximately 50' Rail Monorail Crane, pendant controlled and free standing, with P&H hoist.

P&H 3-Ton x 30' Span Single Girder Bridge Crane, underslung, pendant controlled, with P&H 3-ton hoist.

(2) P&H 3-Ton x 15' Span Single Girder Bridge Cranes, underslung, pendant controlled, with P&H 3-ton hoist.

PLANT SUPPORT

2013 ATLAS COPCO Model G18P-A-125FW Rotary Screw Air Compressor, 25 HP.

2018 ATLAS COPCO Model FX32 Refrigerated Air Dryer, R40A refrigerant.

LEROI Model WM60SIIAH 100 PSI Packaged Rotary Screw Air Compressor, 60 HP.

2019 MACAIR Model HX150A Refrigerated Air Dryer.

ZEKS Model 100HSHA100 HeatSink Refrigerated Air Dryer.

KOHLER Model Power System 35RZ72 Fast Response Diesel Generator, with Ford Model CSG-6491-6005-F diesel engine.

KOHLER Model Power System 50 Fast Response Diesel Generator, with Ford Model LSG-8751-6005-A diesel engine.

Massive selection of Flammable Cabinets, Corrosive Cabinets, Tool Benches and Cabinets, Welding Tables, Pallet Racking, Bar and Stock Racks, and Related Plant Furniture and Fixtures.

Huge Selection of Plant and Office Ff&E Including Flammables and Corrosive Storage Cabinets, Tool Boxes and Parts Cabinets, Strong Hold Cabinets, Racking and Shelving, Job Boxes, Ultra-High End Conference and Office Furniture.

QC & INSPECTION

SATEC Model 60HVL UTM Tensile Tester, with Model A2000 recorder, Model Mark III smart digital indicator, and Pentium Base PC controls.

SATEC Model Vertex 30HVL UTM Tensile Tester, with control panel, and Pentium Base personal computer.

STARRETT Model Sigma HE400 14" Bench Top Optical Comparator, with Model Quadra-Chek 2000 2-axis DRO.

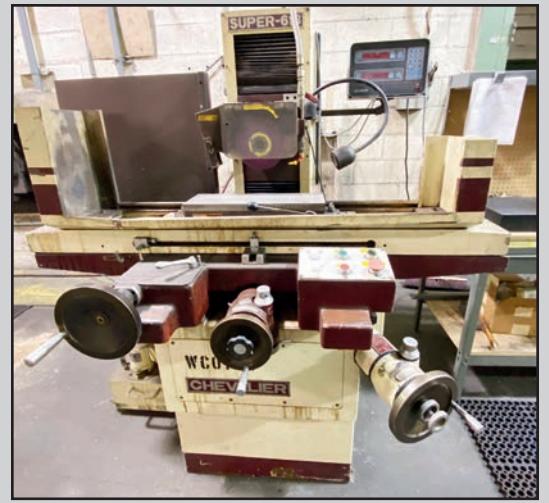
OLYMPUS Model BX60M Microscope, 5x, 10x, 20x, 50x lenses, with halogen light source, Sony power head Model DXC-970MD 3CCD color video camera, Sony Model UD-T1500CN Mavigraph digital color printer, and Pentium personal computer.

METTLER TOLEDO Model IND560 Electronic Integrated Platform Scale, with heavy duty frame type platform.

MICRO VU Excel 661 HC Multi-Sensor Measuring Center.



BIRMINGHAM ENGINE LATHE



CHEVALIER HYDRAULIC SURFACE GRINDER



JET COMBINATION GRINDER

MACHINE TOOLS

BIRMINGHAM Model YCL2080 20/27 x 80" Quick Change Geared Head Gap Bed Lathe, 10 HP motor.

CHEVALIER Model Super 618 6" x 18" Surface Grinder, 2 HP direct drive spindle, power X- and Y-axis feed, with 6" x 18" electromagnetic chuck, and 2-axis digital readout.

2015 KAAST Model PHBH-50 Roll Bender.

WHEELABRATOR Model HB15UA 15 Cubic Foot Vibratory Finisher.

NIAGARA Model A60 60-Ton Back Geared OBI Press, 21" x 32" bed size air clutch.

(2) NIAGARA Model A4 72-Ton Non-Geared OBI Press, 20" x 31" bed size.

NIAGARA Model E-60 60-Ton Eccentric Geared Gap Frame Press, 21" x 32" bed area, air clutch, air counterbalance.



VICTOR VERTICAL MILLING MACHINE WITH DRO



NIAGARA E-60 60-TON STRAIGHT SIDE HYDRAULIC PRESS

ENERPAC 100-Ton H-Frame Hydraulic Press.

VICTOR Model JF-4VS Vertical Milling Machine, 3 HP motor, 9" x 49" table with power cross feed, hydraulic drawbar, with 2-axis DRO.

BESMER Variable Speed Vertical Milling Machine.

VICTOR Model 380V Vertical Milling Machine.

EX-CELL-O Vertical Milling Machine, 1.5 HP 100 to 3,800 RPM variable speed, with 9" x 42" table.

2014 LINCOLN Electric Model Ranger 305 LPG Portable Gas Welder, generator trailer mounted.

(2) LINCOLN Electric Model FLEXTEC 450 450-Amp DC Multi-Process Welders.

2019 MILLER Model Millermatic 252 250-Amp Mig Welder.

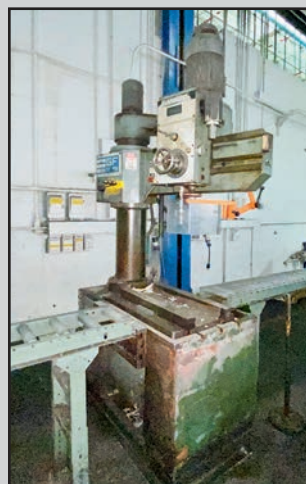
2014 MILLER Model Dimension 452 450-Amp Arc Welder.

LINCOLN Electric Model Ranger 305 LPG Gas Welder-Generator.

2018 MILLER 300-Amp Tig Welder, portable, cart-mounted, chiller unit, foot pedal controls.



BRIDGEPORT VERTICAL MILLING MACHINE WITH DRO



36" RADIAL ARM DRILL

LINCOLN Electric Mig Welder, with Lincoln LN-25 Pro welder wire feeder, cart mounted.

PARKER Hydraulic Hose Crimping System, with assorted dies and parts.

SOUTH BEND Model GF50-800 10" Column x 32" Arm Clever B Drill, power elevation.

SCHRADER Bellows Drill Press.

Multi-Million Dollar Parts, Supplies, and Stores Inventory Including Spare Motors, Valves, Bearings, Seals, Electrical and Drive Controls, Hardware, and Much More!

Massive Spare Parts, Supplies, and Stores Inventory Including Pallet Loads of: Bearings and Pillow Blocks, Drive Controls and Electronics, Motors and Valves, Relays and Actuators, Hydraulic Hoses and Parts, Raw Materials and Extruded Aluminum, Hardware, and Much More.



TERMS OF SALE: To be sold in accordance with CRG Terms of Sale as published on our websites and in the auction catalog. A buyer's premium will apply. All Covid-19 safety protocols, including mandatory masking and social distancing will be enforced. **All Equipment Subject to Prior Sale.**



For complete catalog
crgllc.com 1.800.300.6852